

# Kristin Barta

ILLUSTRATOR • DESIGNER

Located in Raleigh, NC  
kristinbarta@gmail.com  
919.578.0133



# Contents

*Design and Illustrations 2020-2024*

---

 Saunter: a West Coast Summer  
*Digitally Illustrated Print Series*

 Together in Maine  
*Brand Design*

 Celestial Seas  
*Digitally Illustrated Narrative*

 Reflection of Practice  
*Book Design*

 Come to Life  
*Illustration and Environmental Design*

# Kristin Barta

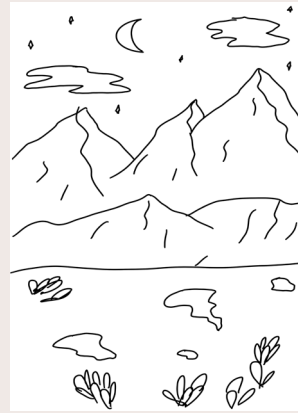
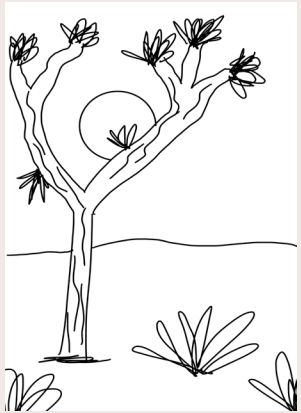
ILLUSTRATOR • DESIGNER

## Saunter a West Coast Summer

*Digitally Illustrated Print Series*

This illustration series explores the landscapes of 7 states and National Parks within the Western United States. Never having been to these states before, these Illustrations were created based on my initial knowledge and visual research. Over the summer of 2021,

I embarked on a month long solo road trip across the country to see these places and to document the printed illustrations next to the scenes they depict. This was an exploratory process of finding locations in real life that most accurately matched the images I created.



# Kristin Barta

ILLUSTRATOR • DESIGNER

## Saunter a West Coast Summer

*Digitally Illustrated Print Series*



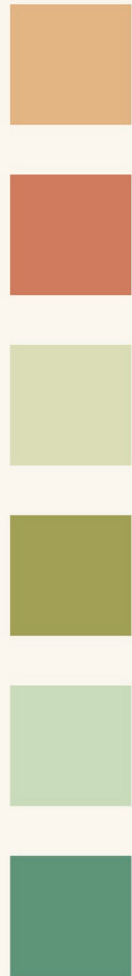
# Kristin Barta

ILLUSTRATOR • DESIGNER

Together in Maine

Brand Design

This Brand Design project was completed in collaboration with a partner and responds to a clients vision for a community kitchen space which provides rental space for cooking classes and also a food pantry of freshly prepared meals which incorporates local produce from Portland, Maine.



# Kristin Barta

ILLUSTRATOR • DESIGNER

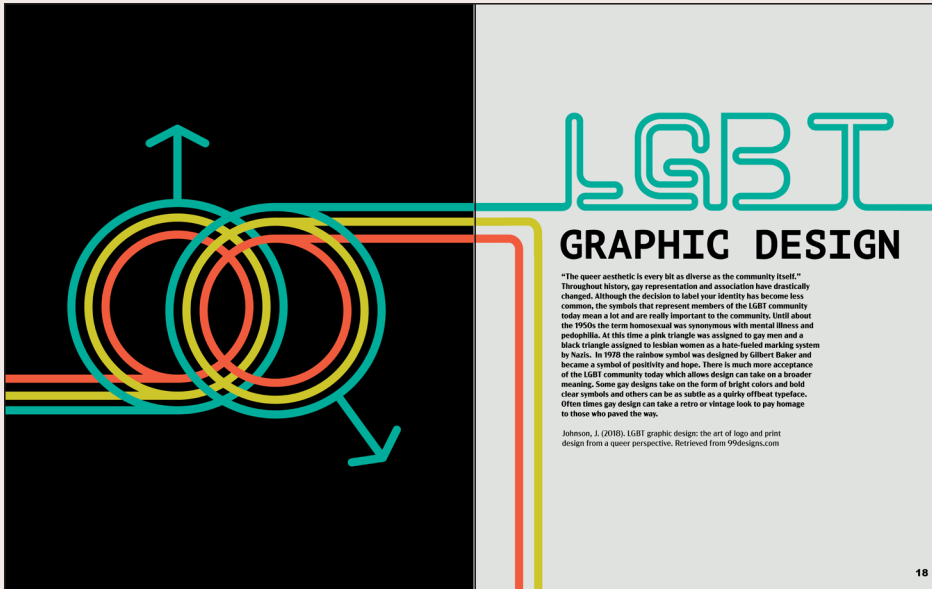
## Celestial Seas

*Digitally Illustrated Narrative*



This series illustrates the Nigerian Folktale of why the sun and the moon live in the sky. Combining the paper like textures and classic theme with clean imagery and modern colors gives this story a more contemporary feel.





Over the course of 12 weeks I explored various social issues and how we approach them in the Design industry. Each week I was tasked with summarizing related articles and designing spreads that visually reflected the issues. Halfway through this process I went back and created a more cohesive grid structure and redesigned the pages using a strict color scheme. This project challenged me to use more experimental systems and typography.



# Kristin Barta

ILLUSTRATOR • DESIGNER

## Reflection of Practice Book Design

contents

- 1. The Crystal Goblet pg 2
- 2. Tech Abuse pg 3
- 3. Usability for Web pg 7
- 4. Acid Graphics pg 7
- 5. Minimalist Design pg 10
- 6. Design for Mental Health pg 11
- 7. Recycling Labels pg 13
- 8. Blind Design pg 15
- 9. LGBT Design pg 18
- 10. Multidisciplinary Design pg 19

### In The Crystal Goblet, Beatrice Ward makes a distinction between a crystal glass and the transparency of typography.

# The Crystal Goblet

## TECH ABUSE

Domestic abuse is a familiar term, but abuse in the latest form of domestic abuse which allows perpetrators to spy, stalk, and manipulate their victims through their personal and shared devices or smart technologies in their homes.

### Understanding Learnability for Web Design:

When creating websites it is essential to know their other design and usability as well as their content. While the design and usability of a website is important, the content is what makes it useful. The design and usability of a website are important, but the content is what makes it useful.

## ACID GRAPHICS

Acid graphics is a style of graphic design that uses bright, neon colors and bold, geometric shapes to create a vibrant, energetic look. It is often used in digital art and branding.

## MINIMALIST SIGN

Minimalist design is a style of graphic design that uses simple, clean lines and a limited color palette to create a modern, sophisticated look. It is often used in branding and user interface design.

## DESIGNING FOR: MENTAL HEALTH

As designers, it is our responsibility to create digital products that support mental health. This involves understanding the needs of users and creating a user experience that is accessible and supportive.

## REDUCE, RETHINK, REMAKE

### RECYCLING LABELS

Recycling labels are an important part of sustainable packaging. They provide information about the recycling process and encourage consumers to recycle properly.

## BLIND DESIGN

Blind design is a style of graphic design that is accessible to people with visual impairments. It uses high contrast, large text, and simple shapes to ensure that the design is usable by everyone.

## LGBT GRAPHIC DESIGN

LGBT graphic design is a style of graphic design that is inclusive and celebratory. It uses a variety of colors and symbols to represent the LGBTQ+ community.

## MULTIDISCIPLINARY GRAPHIC DESIGN

Multidisciplinary graphic design is a style of graphic design that combines elements from different disciplines to create a unique and innovative look. It is often used in branding and user interface design.

Works, Quarterly, The Crystal Goblet, or Printing Should be Invisible. Black Rock Press, 1985.

Ward, C. (2005, June 15). What Happens When The Weaver of Things Disappears or Vanishes? *Graphic Arts for Design*.

Ward, C. (2005, November 23). Understanding Usability for Web Design. *Site and Web Practice*, *Designing Usability*.

Ward, C. (2005, September 15). "What Good is the New Practice? With a Focus on the New Practice." *Site and Web Practice*, *Designing Usability*.

Ward, C. (2005, November 16). *Minimalist Graphic Design*. *Black Rock Press*.

Ward, C. (2005, August 7). Can Better Labels Really Be Recycled? *Black Rock Press*.

Ward, C. (2005, June 15). What's Like to Be a Single Blind Blogger? *Black Rock Press*.

Ward, C. (2005, August 16). *Blind Design: Designing for the Visually Impaired*. *Black Rock Press*.

Ward, C. (2005, November 16). *Multidisciplinary Graphic Design*. *Black Rock Press*.





# Kristin Barta

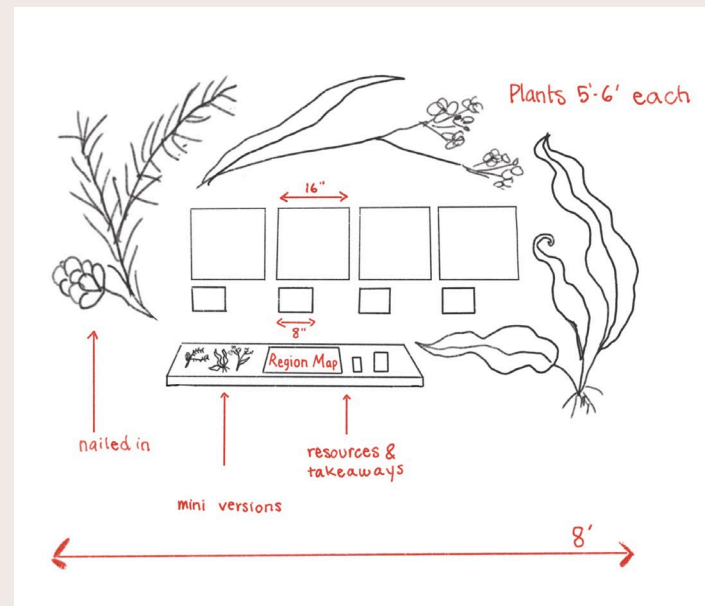
ILLUSTRATOR • DESIGNER

Come to Life  
Environmental Design

I spent a month filtering through the U.S. Fish and Wildlife Service database with over 900 declining flora species across the country. I researched the anthropogenic reasons for their declining populations. I decided which plants I would include based on their Endangered Species Act listing status of either vulnerable, threatened, or endangered. I chose flora that are specific to each region with forms I thought would visually compliment each other when I began drawing.

After the research stage, I moved on to drawing. This process took about 8 hours for each region. I first sketched each plant so I could find a good composition. Next, I would plan out my color use so there would be a good sense of harmony between them and so I could balance my color palette throughout the regions. Finally, I drew each plant adding depth and details.

Next came 3D model building which took me over 30 hours. I focused on the Eastern Region since that's where we live and this region is most relevant to my audience in North Carolina. I used new, recycled, and organic materials to create each plant. Starting with a base of cardboard and building out using twigs and wires that were then covered with silky or shimmery fabrics, paint, paper elements, and glitter (just because). I also created miniature versions of the eastern region plants for people to handle and interact with



# Kristin Barta

ILLUSTRATOR • DESIGNER

Come to Life  
*Environmental Design*



# Kristin Barta

ILLUSTRATOR • DESIGNER

Come to Life  
Environmental Design



## CAROLINA HEMLOCK

*(Tsuga Caroliniana)*

Vulnerable due to an invasive pest from Asia, the Hemlock Woolly Adelgid which feeds on and slowly kills the trees. They are also affected by clearing and logging in their already limited habitats.

## HARPERELLA

*(Ptilimnium Nodosum)*

Endangered due to water diversions for pine plantations or row crops, stream acidification from mining, and siltation/erosion from construction, development, and agriculture.

## AMERICAN HARTS TONGUE FERN

*(Asplenium Scolopendrium Var. Americanum)*

Threatened due to land development and logging which removes shade trees and impacts their specific habitat needs for shade and humidity.



## GIERISCH MALLOW

*(Sphaeralcea Gierischii)*

Endangered due to loss of habitat from gypsum mining and off road vehicle use and illegal dumping. They also compete for habitat with invasive plants like red brome and cheatgrass.

## BRADY PINCUSHION CACTUS

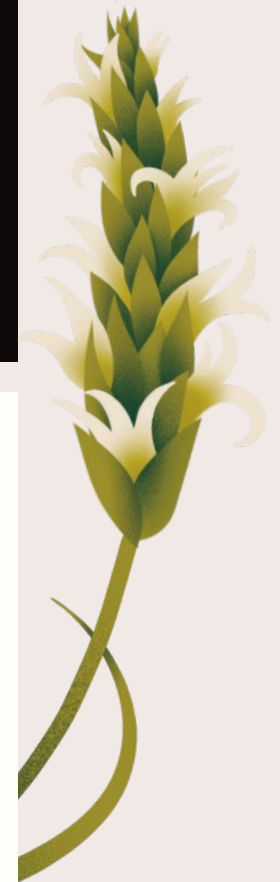
*(Pediocactus Bradyi)*

Endangered due to collectors of rare cacti, off-road vehicles, uranium mining, and livestock grazing. The cactus already had a limited habitat because it requires a specific soil type and has a small gene pool.

## SOUTHWESTERN PRICKLY POPPY

*(Argemone Pleiakantha)*

Endangered due to drought and a recently discovered fungal disease.





## DWARF LAKE IRIS (*Iris Lacustris*)

Threatened due to shoreline development for vacation homes, road widening, chemical spraying and salting, and disturbance and destruction by off-highway vehicles.

## PITCHER'S THISTLE (*Cirsium Pitcheri*)

Threatened due to shoreline development and invasive species colonization. Visitors also tend to trample the plant when walking to the beach. Pitcher's thistle only blooms once after growing for years.

## UTE LADY'S TRESSES (*Spiranthes Diluvialis*)

Threatened due to disturbances to the natural hydrology of its habitat through a lowered water table for irrigation of nearby agriculture. It also competes with invasive plant species like Garrison creeping foxtail and quackgrass.



## MARCESCENT DUDLEYA (*Dudleya Cymosa* ssp. *Marcescens*)

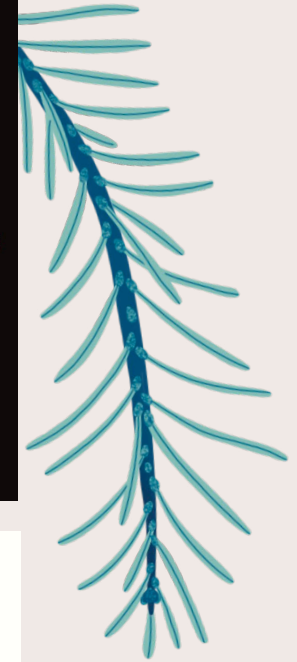
Threatened due to growing degradation through disturbances from recreational activities such as graffiti artists and rock climbers who tear out the moss and lichens vital to the habitat.

## PENDANT KIHII FERN (*Adenophorus Periens*)

Endangered due to geothermal development, lava, and gas from volcanoes as well as competition with invasive species.

## GENTNER'S FRITILLARY (*Fritillaria Gentneri*)

Endangered due to destruction of habitat from agricultural development, construction, and vehicle use on logging roads. Pedestrians pick them and dig them up to keep or cultivate. Herbicides used to kill the invasive yellow star thistle are a major threat too.



Thank You

FOR YOUR CONSIDERATION

919.578.0133

[kristinbarta.com](http://kristinbarta.com)

[kristinbarta@gmail.com](mailto:kristinbarta@gmail.com)